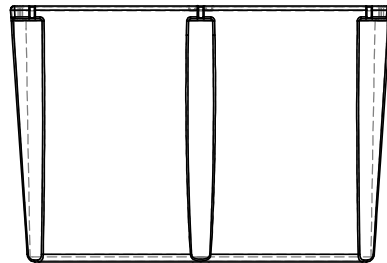
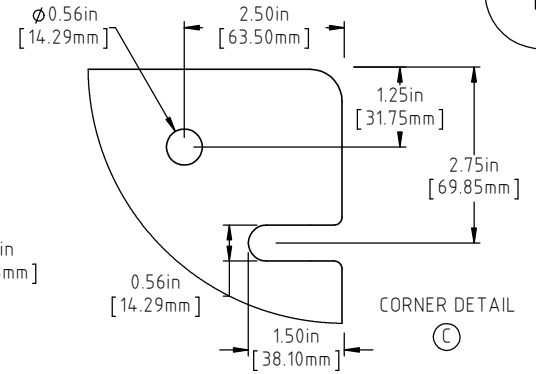
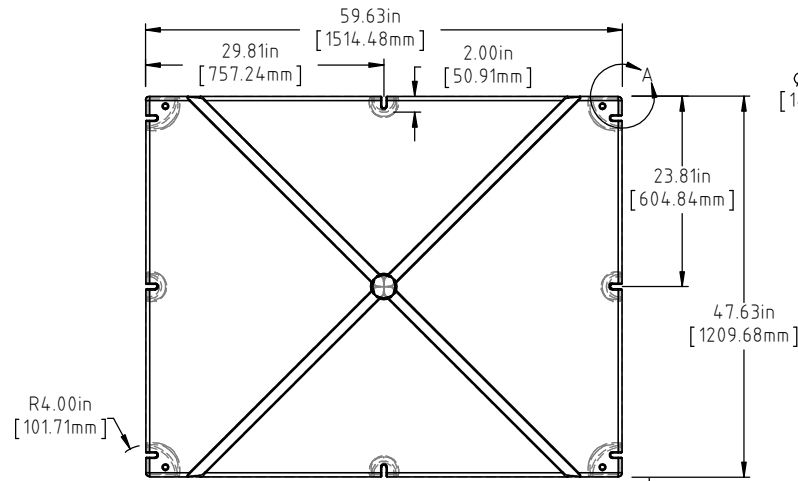


© DEN HARTOG INDUSTRIES, INC.

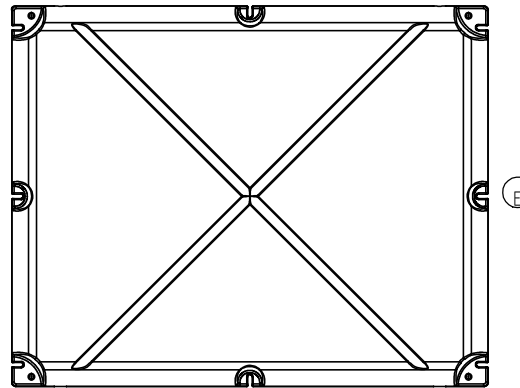
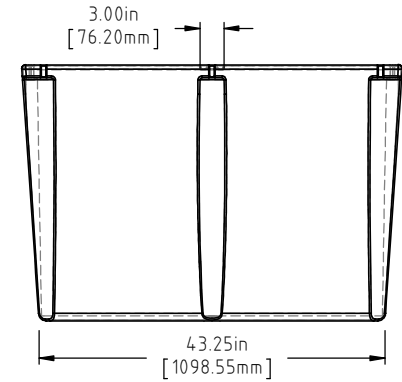
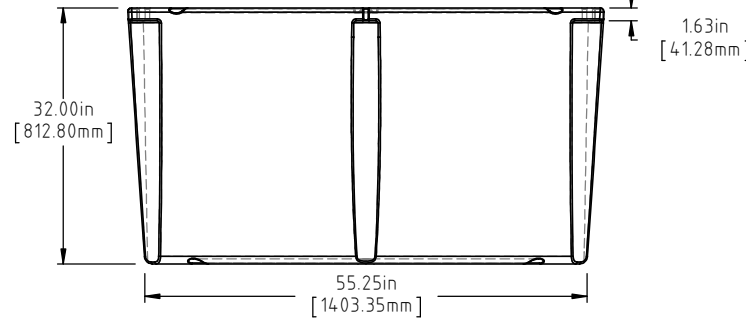
Copyright. All information furnished within this document, electronic file or design correspondence is the property of Den Hartog Industries, Inc. and shall not be used, disclosed to others or copied without the expressed written consent of Den Hartog Industries, Inc.

4860-32

E



F



F

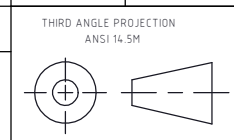
A D

NOTE: BUOYANCY IS 2815 LBS.(1276.86 KG)

E	BOTTOM AND SIDE VIEWS ADDED TO PRINT.	ADH 11/13/14	2959
D	2815 LBS WAS 2800 LBS	ADH 6/25/12	2420
C	CORNER DETAIL ADDED	ADH 8/28/08	1710
B	METRIC DIMENSIONS ADDED	ADH 7/1/08	1685
A	ADD BUOYANCY NOTE	GWC 1/11/07	
REV	DESCRIPTION	BY / DATE	CCN

DRAWN / DATE REH 8/29/03	MATERIAL POLYETHYLENE
APPRD. / DATE ADH 11/6/07	

ALL DIMENSIONS ARE IN DECIMAL INCHES
TOLERANCES UNLESS OTHERWISE SPECIFIED
POLYETHYLENE
±1% @ 68°F



THIRD ANGLE PROJECTION
ANSI 14.5M

SHOT WEIGHT:
82 LBS. (37.19 KG.)

SHIPPING WEIGHT:
SEE NOTES

FINISH:

NOTES:
1.) AF 82 LBS. (37.19 KG.)
2.) FF 130 LBS. (58.97 KG.)



Den Hartog
INDUSTRIES, INC.

Ace Roto-Mold Injection Molding Blow Molding Sowjoy

4010 HOSPERS DRIVE S. BOX 425, HOSPERS, IOWA 51238-0425

DESCRIPTION 48 X 60 X 32 FLOAT	SCALE N.S.	PART NO. 4860-32
-----------------------------------	---------------	---------------------